



*Simply the most reliable!*



## COMFORT THROUGH WARMTH

The ivory enamel truly compliments the Hastings and Greenfield stoves.

These beautifully detailed cast iron stoves are accented by new enamel colors, black, ivory, red and majolica brown. St. Croix brings to life the rich traditions of a cast iron wood stove while efficiently burning wood pellets in the Hastings and corn, wheat, or rye in the Greenfield.



## MAJOLICA INSPIRED ENAMEL FROM ST. CROIX

Majolica Brown gives the cast iron stove a unique personality under different lighting conditions.

Its classic federal style with radiant door detail makes the Hastings or Greenfield a warm and beautiful addition to any room in your home, and the functional doors give you a large fire view when open.



# COMFORT THROUGH WARMTH

Today's homeowner wants a way to efficiently heat while enjoying the traditional beauty of a wood stove. St. Croix's Greenfield and Hastings models deliver both qualities.

In keeping with St. Croix's tradition, these stoves are efficient heaters as well as master crafted appliances built with the distinctive styling and craftsmanship of a fine piece of furniture. The new porcelain enamel finish will make a beautiful addition to any home.

*Enamel Black adds a touch of elegance compared to traditional painted surfaces*

50 Pound Hopper

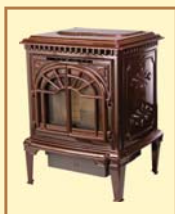
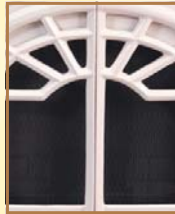
User-Friendly Control Board

Tube Scraper Rod

Hinged Front Panel

Adjustable Heat Setting

Large Ash Pan



## St. Croix Pellet and Corn Stoves

Manufactured by:

**Even Temp, Inc. P.O. Box 127 Waco, NE 68460**

Manufacturing Quality Hearth Products Since 1977

Web: [stcroixheat.com](http://stcroixheat.com)

Your Authorized St. Croix Dealer