

616 / 430 GSR 1-Piece Surround Panel

Installation Instructions (See SKU's Below)

Packing List

- 1-Piece Surround Panel

616 Dimensions and SKU's

SKU	Height	Width
96100349	30.5"	42"
96100350	34"	44"

430 Dimensions and SKU's

SKU	Height	Width
96100337	25"	38"
96100338	28.5"	40"

Installation



Certain vent configurations require diffuser modification, which must be done before installing the vent or positioning the insert inside the fireplace. See the Manual for details.



INSTALL THE LIGHT SHIELD BEFORE INSTALLING THE SURROUND PANEL (ALL FACES EXCEPT SHADOWBOX). The light shield (shipped with the face) prevents light from exiting the upper grill area. Install this before installing the surround panel.

NOTE: The surround panel is installed with the insert in position with the flue and gas line attached. See manual for order of installation.

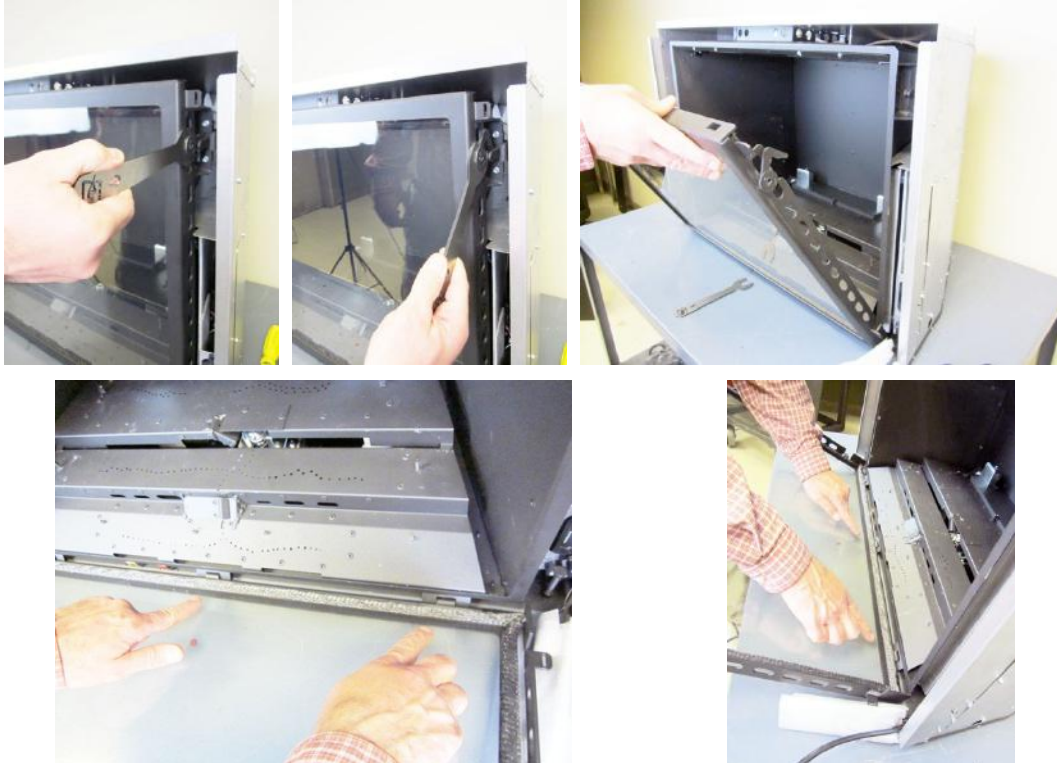
- 1 Remove the glass removal tool from the right side of the insert using a nutdriver.



The glass latch tool is shipped in this location. Loosen this screw to remove the tool. When done with the tool, hang it in the same location

616 / 430 GSR 1-Piece Surround Panel Installation Instructions (See SKU's Below)

- 2 Remove the glass frame as shown below. The glass frame is held in place with three tabs inserted into three slots at the bottom of the insert.



- 3 Remove and discard the shipping brackets and 2 screws from both sides of the insert.

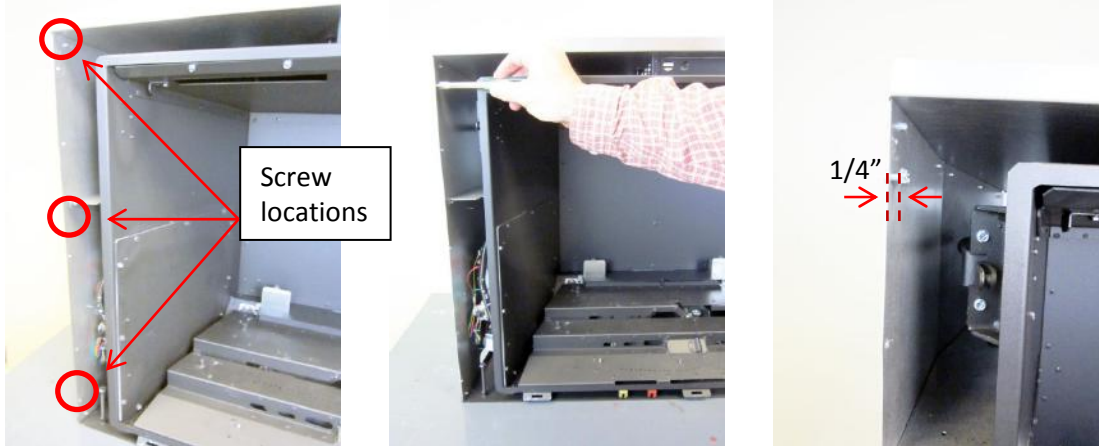


NOTE FOR GS1 UNITS ONLY

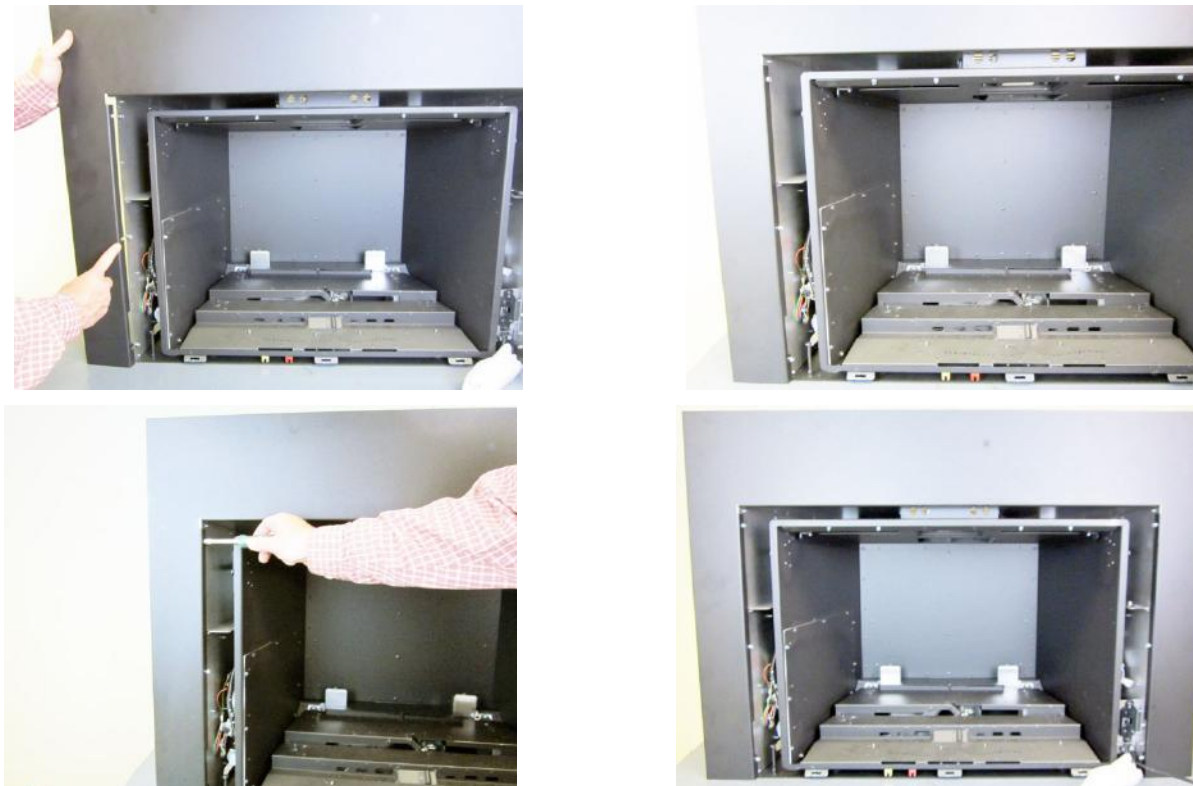
The rheostat assembly is shipped inside micro-foam, tucked next to the glass frame. Place it on the hearth.

616 / 430 GSR 1-Piece Surround Panel Installation Instructions (See SKU's Below)

- 4 Install six screws (included with the insert) to the sides of the inserts, 3 on each side, as shown below. Leave a $\frac{1}{4}$ " gap between the screw head and the insert, the surround panel will hang on these screws.



- 5 Slide the surround panel into position as shown below. The notches on the sides of the surround panel fit over the 6 screws installed previously. Tighten the screws to secure the panel.



616 / 430 GSR 1-Piece Surround Panel Installation Instructions (See SKU's Below)

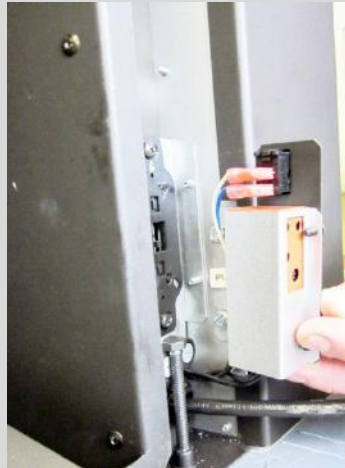
NOTE FOR GS1 UNITS ONLY

The rheostat assembly is shipped inside micro-foam, tucked next to the glass frame. Place it on the hearth.

Attach the rheostat assembly to the insert as shown below.



Install 2 screws (included with the insert) into these 2 pem studs. Leave a 1/4" gap.



Slide the rheostat assembly into place.



Tighten the screws to secure.