



616 / 430 GSR Face Installation Instructions

616 Faces			430 Faces	
Wilm Black 96900221	Rect Bevel Black 96900752	Times Square 96900761	Wilm Black 96800207	Times Square 96800706
Wilm Carbon 96900222	Universal 96900755	Profile Black 96900763	Wilm Carbon 96800208	Profile Black 96800708
Wilm Carbon 96900223	Shadowbox Blk 96900757	Profile Stnls 96900765	Shadow Black 96800703	Profile Stnls 96800709
Shadowbox Blk 96900750	Shadowbox Brnz 96900758	Profile Ant Cop 96900766	Shadow Bronze 96800704	Profile Ant Cop 96800710
Shadowbox Brnz 96900751	Rect Bevel Blk 96900759	Profile Pnt Brz 96900767	Rect Bevel Blk 96800705	Profile Pnt Brz 96800711

Packing List

- Face
- All Faces Except Shadowbox:
 - Light Shield (see picture below)
 - (2) #10 x 3/8" Screws
- Wilmington Faces:
 - Cove Covers
- Wilmington Carbon Faces:
 - Patina Touch-Up Kit (with instruction sheet)

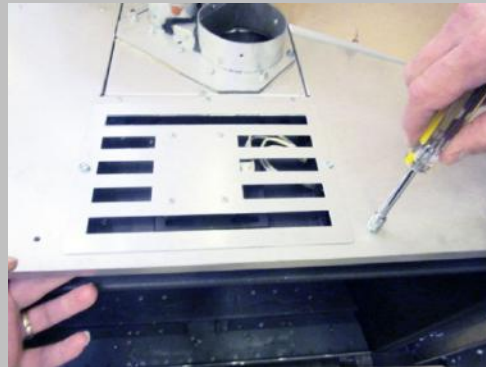
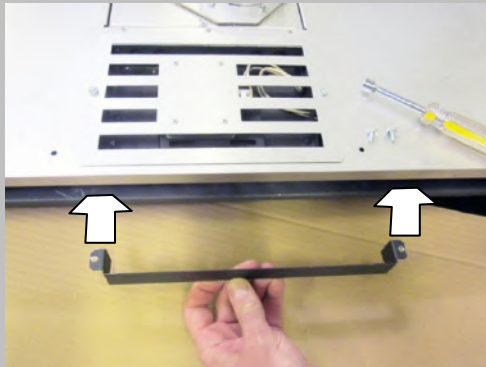


Light Shield Installation (Applies to all faces except Shadowbox)

IMPORTANT: Install the light shield before installing the insert into the fireplace.

The light shield prevents light from the upper accent light from exiting the grill.

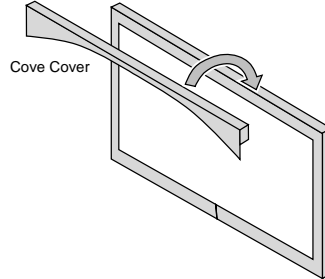
1. Remove the glass from the insert.
2. Attach the light shield to the insert with the two included screws using a 5/16" nutdriver.



616 / 430 GSR Face Installation Instructions

Wilmington Faces Only

Attach the cove cover to the glass frame as shown below.



Face Installation

The insert should be in place with the surround panel installed. See the manual for details.

1. Insert the 2 lower tabs on the face into the 2 slots on the glass frame.
2. Press forward and up on the face until the upper tabs insert into the upper slots on the glass frame. Then the face will slide down securely. See the photos below.



Stainless Steel / Copper – Care and Cleaning

Use glass cleaner on a soft cloth to remove any marks left on the surface.