



# 564 Enamel Fireback

## Installation Instructions (sku 96100203)

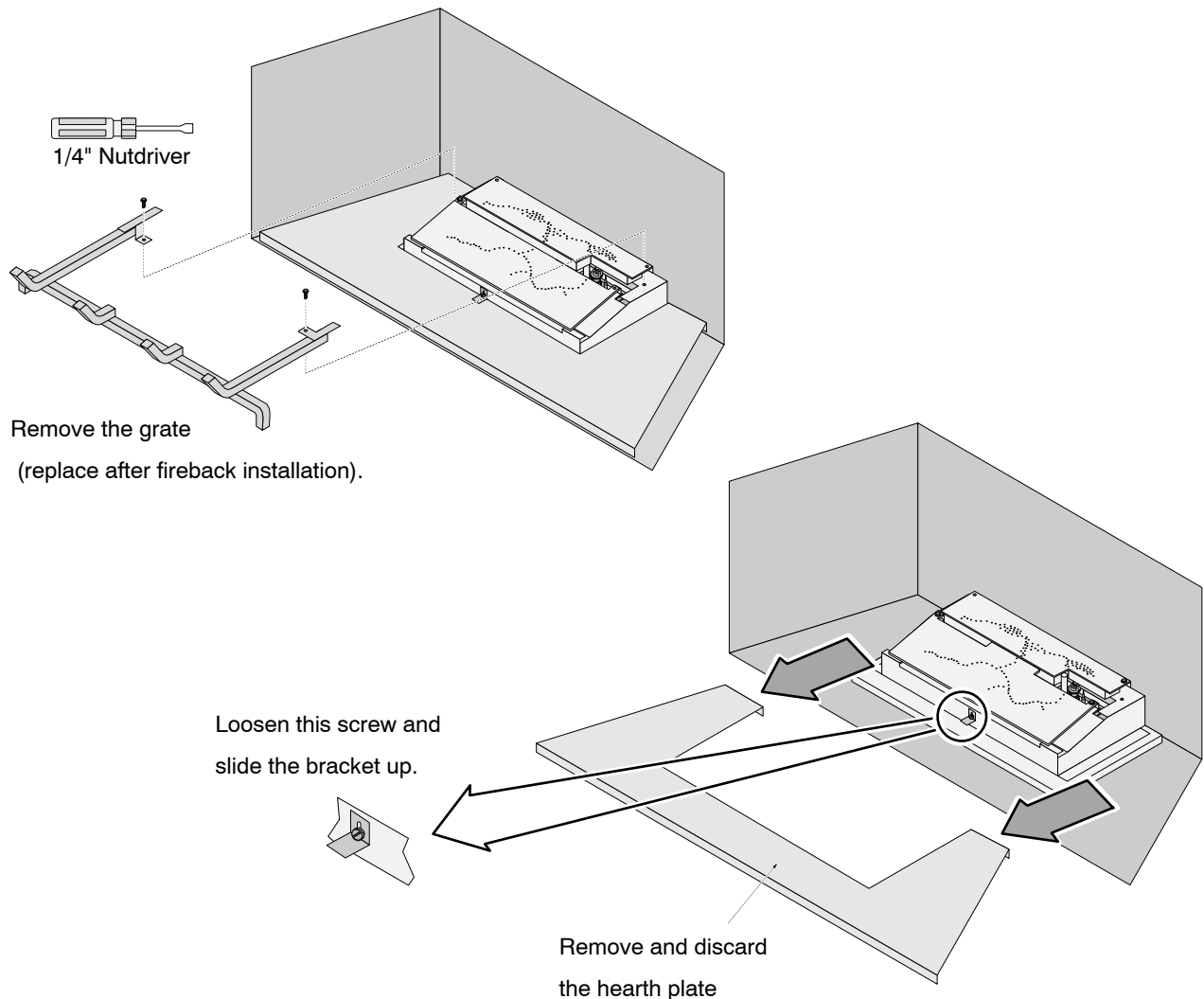
### Packing List

- Floor Fireback
- (2) Side Firebacks
- Rear Fireback

### Installation

**WARNING:**  
Turn off gas to the appliance and make sure it has fully cooled prior to conducting service.

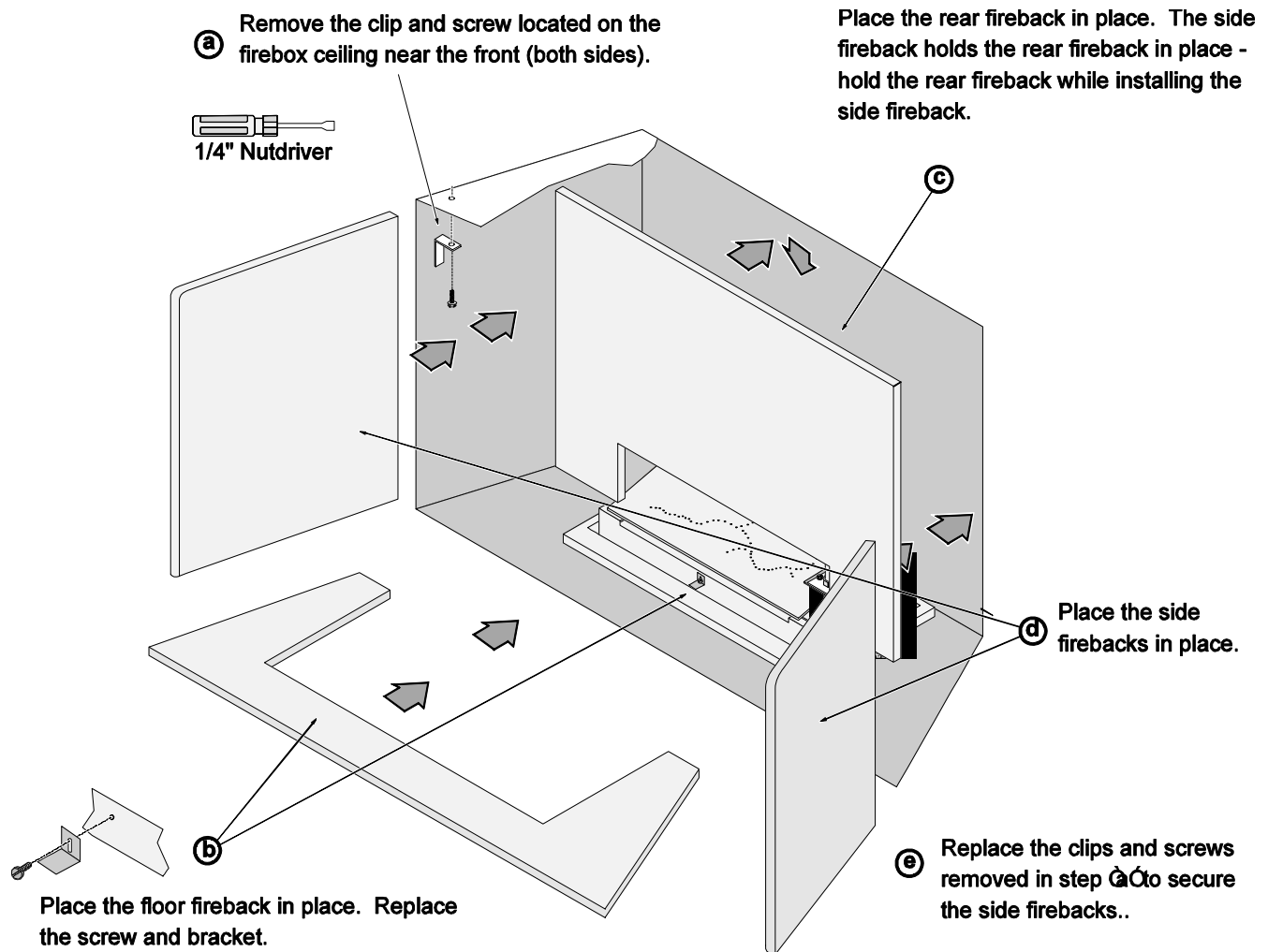
- 1 Remove the glass frame and logs.
- 2 Remove the grate (replace after fireback installation). Remove and discard the hearth plate.





# 564 Enamel Fireback Installation Instructions (sku 96100203)

3 Install the firebacks following the directions below.



4 Restore the fireplace to the correct configuration.

## Cleaning

We recommend cleaning the enamel surface with glass cleaner and a soft cloth.